

# ALLAMBIE ROAD OSHC

## Spring 2025 Vacation Care Program

### Monday 29 September Wheels and Sausages

Let's get ready to roll! Bring your bikes, skateboards, skates, and scooters for a day of outdoor play.

We'll top off the day by refuelling with a sausage sizzle lunch.

**Cost: \$82.21**



### Tuesday 30 September Taco Tuesday

It's Taco Tuesday! As part of our fun and tasty learning experiences, the children will have the opportunity to help prepare and enjoy their own tacos.

**Cost: \$82.21**



### Wednesday 1 October Archery Tag

The perfect activity for vacation care centres, offering loads of fun and excitement, as this action-packed game lets participants engage in thrilling attacks.

**Cost: \$103.09**

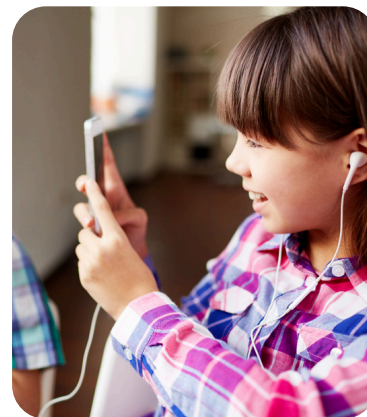


### Thursday 2 October Technology Day

Apps, puzzles, and digital drawing! We'll explore how tech can inspire play, problem solving, and learning.

With plenty of screen-free breaks and group challenges.

**Cost: \$82.21**



### Friday 3 October Puzzle Day

We're diving into a world of brain-teasing fun with puzzles of all shapes and sizes!

Jigsaws, riddles, mazes, and more!

**Cost: \$82.21**

#### DON'T FORGET

Remember to bring Morning tea, Lunch and Afternoon tea, Water bottle, Hat, Fully Enclosed Shoes.

\*Allambie Road OSHC is approved for the Child Care Subsidy (CCS), which helps cover daily fees as well as incursion and excursion fees for eligible families.



Edensor Park Community Centre  
Allambie Road,  
Edensor Park NSW 2177



Monday to Friday  
7:00am - 6:00pm



02 9823 4262  
or 0422 864 308



allambie.oshc@cfs.asn.au



www.cfs.asn.au

# ALLAMBIE ROAD OSHC

## Spring 2025 Vacation Care Program

### Monday 6 October PUBLIC HOLIDAY



#### DON'T FORGET

Remember to bring  
Morning tea, Lunch  
and Afternoon tea,  
Water bottle, Hat,  
Fully Enclosed  
Shoes.

### Tuesday 7 October Magic Show

Our professional magician will put on an interactive and engaging show that will leave a remarkable impression on the kids' faces. With a multitude of tricks up his sleeve, there won't be a dull moment.

**Cost \$103.09**



### Wednesday 8 October Out of the Box Day

A day of abnormal and opposites as we get "out of the box".

From where we eat to the games we play and create, our kids won't be expecting what comes next!

**Cost: \$82.21**



### Thursday 9 October Colour Day

How many colours can you wear?

We invite your child to come dressed in as many colours as possible – vibrant colours to match their vibrant personalities!

**Cost: \$82.21**



### Friday 10 October Tie Dye Day

Join us in some fun, messy and exciting tie-dye experience. Please send your child in old clothes or pack a spare set that you don't mind getting messy, as this activity can get colourful and fun.

**Cost: \$82.21**



\*Allambie Road OSHC is approved for the Child Care Subsidy (CCS), which helps cover daily fees as well as incursion and excursion fees for eligible families.



Edensor Park Community Centre  
Allambie Road,  
Edensor Park NSW 2177



Monday to Friday  
7:00am - 6:00pm



02 9823 4262  
or 0422 864 308



allambie.oshc@cfs.asn.au



www.cfs.asn.au

# ALLAMBIE ROAD OSHC

## Spring 2025 Vacation Care Program

**Monday 13 October**

### Sport Star Dress Up

Come dressed as your favourite athlete! Whether it's a footballer, tennis player, gymnast, cricketer, or any sports star!

Wear your jerseys, bring accessories, and even some props because **best dressed wins a prize.**

**Cost: \$82.21**



**Tuesday 14 October**

**Wednesday 15 October**

**Thursday 16 October**

**Friday 17 October**

**\*Allambie Road OSHC is approved for the Child Care Subsidy (CCS), which helps cover daily fees as well as incursion and excursion fees for eligible families.**



Edensor Park Community Centre  
Allambie Road,  
Edensor Park NSW 2177



**Monday to Friday**  
7:00am - 6:00pm



**02 9823 4262**  
or **0422 864 308**



**allambie.oshc@cfs.asn.au**



**www.cfs.asn.au**



# ALLAMBIE ROAD OSHC

## Spring 2025 Vacation Care Program

### Important Reminders

- Programmed activities are subjected to change due to unforeseen circumstances.
- Bookings are essential with a minimum of 2 days per vacation care period.
- Cancellations must be made 48 hours before the booked session otherwise a cancellation fee of \$15.00 will apply. Voicemail, email or SMS notification on the centre mobile is available for after-hours advice of cancellations.
- Breakfast is provided.
- To enforce child to staff ratios, all children are required to be at the centre **by 8.30am** during excursion and incursion days. Children enrolled on excursion day **MUST** attend the excursion, as this is a condition of enrolling on that day. No educators will be staying at the centre. You will not be allowed to bring your child to the venue as we may be breaking staff to child ratio.
- To enforce child to staff ratios, all children are required to be at the centre **by 9:30am** during non-excursion days.

### What to bring

- Nutritious food & drink for morning tea, lunch and afternoon tea. **Please DO NOT bring** soft drinks, junk food or food that need to be reheated. **Please DO NOT bring** foods containing nuts e.g.: peanut butter, Nutella or Hazelnut spread.
- Refillable water bottle
- Hat (Sunscreen will be provided at the centre)
- Please do not bring any personal toys to the centre, unless it is stated in the program.

### What to wear

- Appropriate clothing according to weather and daily activities on the program. Singlets and muscle tops are **not** to be worn.
- Enclosed footwear at all times. Thongs or sandals are **not** to be worn.

### Child Care Subsidy (CCS)

- Allambie Road OSHC is approved for child care subsidy (CCS).
- The Child Care Subsidy (CCS) helps cover daily fees as well as incursion and excursion fees for eligible families. To learn more, visit the Services Australia's website: <https://www.servicesaustralia.gov.au/child-care-subsidy>



Edensor Park Community Centre  
Allambie Road,  
Edensor Park NSW 2177



**Monday to Friday**  
7:00am - 6:00pm



**02 9823 4262**  
or **0422 864 308**



[allambie.oshc@cfs.asn.au](mailto:allambie.oshc@cfs.asn.au)



[www.cfs.asn.au](http://www.cfs.asn.au)